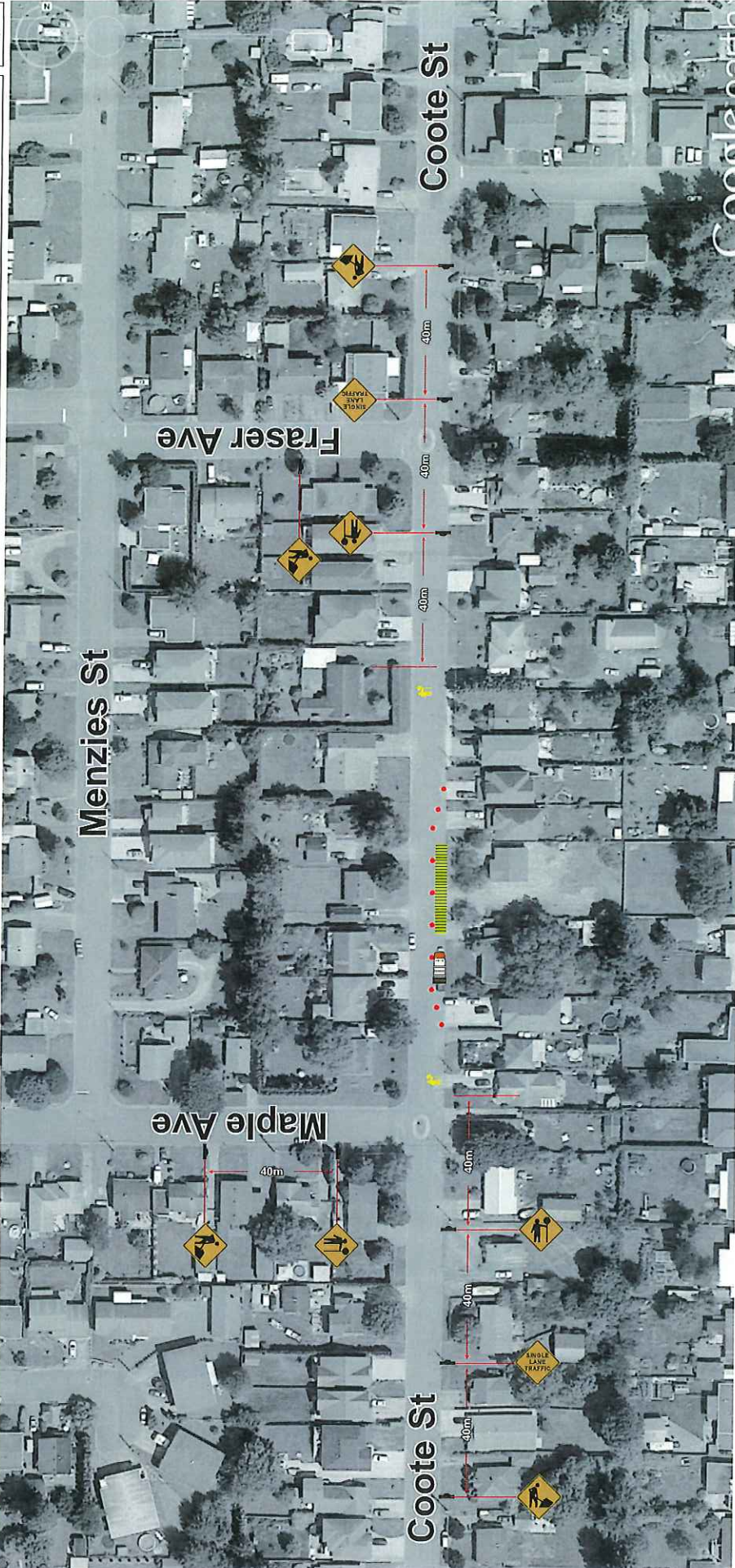




Traffic Control Plan - Cold Mill and Paving - August 2nd



Streetwise TRAFFIC CONTROLLERS <small>TRAFFIC PLAN</small>	TRAFFIC CONTROL PLAN DATE OF LAST REVISION 2016-07-29
	Commander Name: Lowen Paving Job Description: TCP 1 of 1 Date: July 27th, 2016 Cold Mill and Paving 9448 Cootes Street Traffic Supervisor Contact: Angelia Fox Phone: 604-858-7730 Email: Angelia@StreetwiseTraffic.ca Traffic Plan Contact: Tehjay Fox Phone: 604-799-6750 Email: Tehjay@StreetwiseTraffic.ca

	TRAFFIC CONTROL PERSONNEL
	SIGN STAND (TRI-POD)
	SIGN STAND (WINDMASTER)
	SIGN FLAGS
	CLASS 1 BARRICADE
	WORKZONE
	TRAFFIC BARREL
	TUBULAR MARKER - TYPED
	BUFFER VEHICLE
	FLASHING ARROW BOARD (FAB)
	EXISTING BUS STOP CLOSED
	RELOCATED BUS STOP

DRAWING SPECIFIC NOTES

- This plan is to assist first responders if necessary
- TCPs will assist pedestrians around the workzone

GENERAL NOTES

- All traffic control shall conform to the TCM and the latest catalogue for Standard Traffic Signs
- Signs shown are representations of signs only and the MUTI Construction Sign Catalogue should be used for disabled sign design
- Dimensions shown are in metres and are the minimums except as otherwise indicated
- All signs shall be covered or removed while the works are in effect
- Active Work Zones and Hazards shall be delineated with cones and flaggers and the travelling public
- Maximum distance between cones/delineator/barrel should be 10m
- Tubular markers and signs will be double based and well secured during windy conditions
- Distances may be adjusted due to urban block length
- These pages are best printed on a "tabloid" (11x17) page size